

# COMPOSITE PROFILES

## HOT EXTRUDED SPECIAL STEEL PROFILES FOR LASTING CONNECTIONS

EVERY MANUFACTURING PROCESS REACHES ITS PHYSICAL AND TECHNICAL LIMITS AT SOME POINT. IN SPITE OF THIS, IT IS OFTEN WORTHWHILE TO THINK BEYOND THESE LIMITS. THIS IS ESPECIALLY TRUE WHEN COMBINING THE INTELLIGENT INTERACTION OF TWO DIFFERENT MANUFACTURING PROCESSES, LIKE:

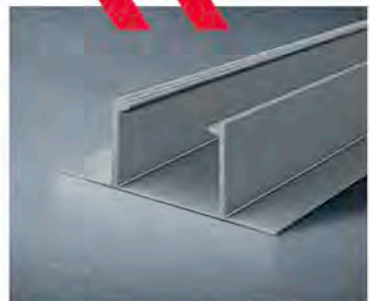
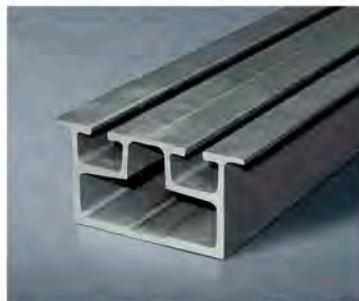
- ✓ HOT EXTRUSION
- ✓ LASER WELDING



### + EXPAND THE LIMITS

- Higher complexity
- Dimension enhancement
- Material mix
- Flexible wall thickness

### + MULTIFUNCTIONALITY

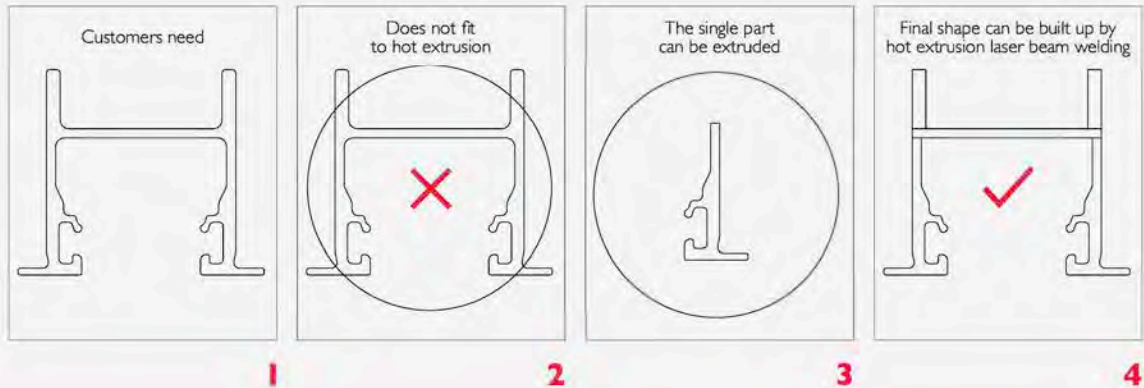


# COMBINED SOLUTIONS

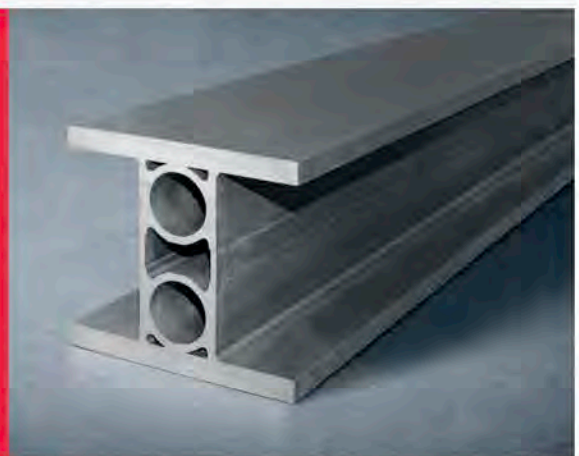
Let us assume a customer needs a steel profile according to the first drawing on the left. Manufacturing the product via hot extrusion would not be possible because of dimensional restrictions.



**COMBINING SOLUTIONS IS THE ANSWER: IT IS POSSIBLE TO PRODUCE SINGLE COMPONENTS VIA HOT EXTRUSION AND LASER WELDING AND TO COMPOUND THEM WITH LASER WELDING TECHNOLOGY.**



Hoesch Schwerter Extruded Profiles GmbH as part of the Business Unit Hot Extrusion cooperates with Montanstahl AG and Innostahl Engineering GmbH to provide the necessary know-how and manufacturing expertise to create high quality composite profiles at competitive prices.



**HOT EXTRUDED**  
SPECIAL STEEL PROFILE

SIDERVAL...

siderval@siderval.it  
siderval.it