

## Hexagonal Tubes

Grades:

AISI 304/304L, 316/316L

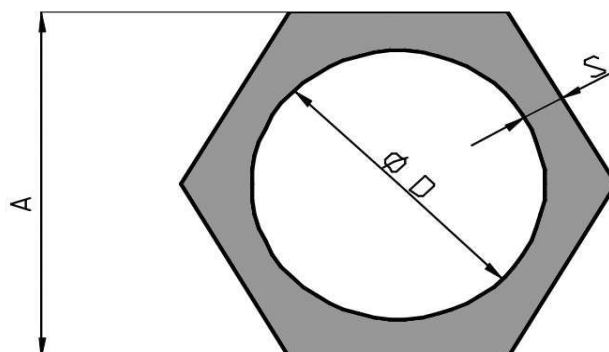
Random lengths L=20' - 25' (4/7m)

Otherwise as request.

General tolerances

according to ASTM A 484/A 484M

**Further grades and dimension available on request**



N° PRE	DIMENSION (inch)			psd/ft	Siderval Profile N°
	A	D	S		
11677	1,378	0,709	0,335	4,37	
12781	1,394	0,752	0,321	4,30	
11353	1,417	0,748	0,335	4,50	
11354	1,417	0,945	0,236	3,63	
13591	1,484	0,748	0,368	5,11	
14432	1,500	0,874	0,313	4,70	
10156	1,575	0,984	0,295	4,84	
11479	1,575	1,102	0,236	4,17	
11355	1,614	1,063	0,276	4,77	
9657	1,811	0,906	0,453	7,59	
11676	1,850	0,866	0,492	8,27	
7652	1,890	1,417	0,236	5,17	
9656	1,969	1,102	0,433	8,33	
13511	1,969	1,181	0,394	7,86	
9106	1,969	1,378	0,295	6,38	
5417	1,969	1,535	0,217	5,11	02787
14545	2,000	1,000	0,500	9,27	
9623	2,165	1,378	0,394	8,94	
13516	2,165	1,535	0,315	7,66	
5418	2,165	1,575	0,295	7,32	02788
9655	2,362	1,378	0,492	11,56	
11496	2,362	1,575	0,394	9,81	
1049	2,441	1,890	0,276	8,00	00621
10517	2,500	1,500	0,500	12,63	
12782	2,512	1,661	0,425	11,42	
5326	2,520	1,969	0,276	8,33	02718
572	2,598	1,969	0,315	9,54	00358
6055	2,756	1,654	0,551	11,96	03318

## Hexagonal Tubes

Grades:

AISI 304/304L, 316/316L

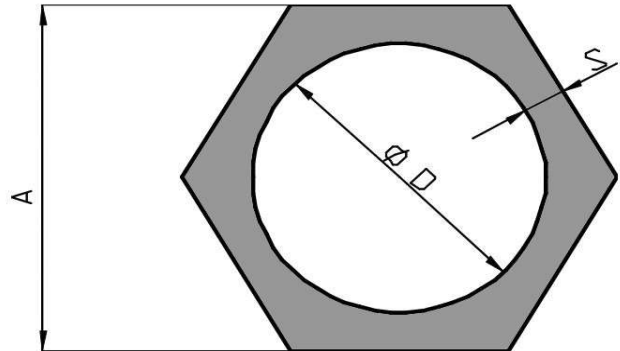
Random lengths L=20' - 25' (4/7m)

Otherwise as request.

General tolerances

according to ASTM A 484/A 484M

**Further grades and dimension available on request**



N° PRE	DIMENSION (inch)			psd/ft	Siderval Profile N°
	A	D	S		
13559	2,756	1,772	0,492	14,04	
11823	2,756	1,909	0,423	12,90	05041
5373	2,756	1,969	0,394	12,30	02755
11141	2,874	1,969	0,453	14,25	
5327	2,913	2,205	0,354	12,23	02719
5577	3,150	2,559	0,295	11,96	02922
9589	3,346	2,559	0,394	15,79	04605
14632	3,543	2,283	0,630	23,05	
5146	3,543	2,756	0,394	17,00	02558
7651	3,622	3,071	0,276	13,44	
13348	4,181	2,626	0,778	33,13	
9146	4,189	3,186	0,502	25,07	
12636	4,472	2,878	0,797	37,56	
2287	4,488	2,559	0,965	41,87	00863
13347	4,551	2,878	0,837	38,91	
12637	4,839	3,126	0,856	43,75	
13349	4,921	3,126	0,898	45,29	
10239	5,000	4,500	0,250	19,56	
13350	5,287	3,378	0,955	51,95	