

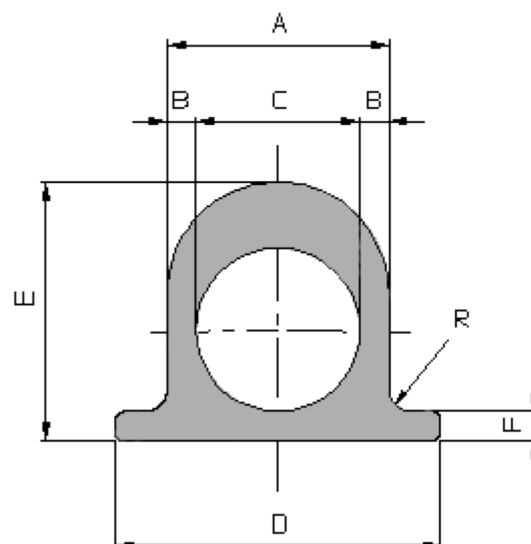
Tubi Omega

Tabelle dei tubi omega secondo:

ASTM / ASME
DIN 17243 TRD 107
DIN 17175 Grade /I

Lunghezza barre secondo richiesta
Tolleranze dimensionali sottoindicate

Certificato di collaudo secondo:
EN 10204/ 3.1B



A	B	C	D	E	F	R	Profilo (Nr.)	Peso (Kg/m.)	L max (m.)
±0.8 (mm)	+1.5/-0 (mm)	(mm)	+0.4/-0.8 (mm)	+0.7/-0.8 (mm)	±0.5 (mm)	+2/-0 (mm)			
38	5	28	50	47.5	6	5	PRE/5372	8.9	11
38	5	28	56.4	48	6	5	03935	9.2	12
38	6.3	25.4	50	43.2	6.3	4	04407	8.3	10
38	6.3	25.4	50	45.3	6.8	3	03886	9.0	10
38.1	4.6	28.9	47.6	44.5	4.55	4	03307	7.3	12
38.1	4.6	28.9	56	44.5	5	4	03306	7.7	12
38.1	5	28.1	56.2	44.5	5	4	03362	8.1	12
38.1	7	24.1	60	44.45	6	4	PRE/6935	9.6	10